

# Absorta est mors

Alto, 2 violini, viola da gamba + bc

## Ritornello

Adagio

piano

Alto

Violino 1

Violino 2

Viola da gamba

BC

6

13  
11  
9

piano

6

43

6

6

43

10

Alto

A

Alto Ab-sor-ta est mors, ab-sor-ta est mors in vi-cto-ri-am, in vi-

bc

6  
5

15

A

cto - - - ri-am, ab-sor-ta est mors, ab-sor-ta est mors in vi-cto -

bc

6  
4

43

21

A

ri-am, in vi-cto - - - - - ri-am.

bc

6  
#4

76  
34

43

Ritornello ut supra

25

A U - bi tu - us mors a - cu - le-us, u - bi tu - a in-fer-ne, vi-cto - ri-a,

bc

56  $\frac{3}{4}$   $\frac{7}{3}$  65

29

A ab - sor - ta, ab - sor - ta, ab - sor - ta in vi-cto - - -

v11

VI2

vdg

bc

6 6 #

36

A

bc

65 6 2

43

A ri - am,

v11

VI2

vdg

bc

9 6  
4 5

50

v11

V12

vdg

bc

6

6  
4  
2

56

A

ab -

v11

V12

vdg

bc

6/

5  
4

5  
43

62

A

sor - ta, ab - sor - ta, ab - sor - ta in vi - cto - ri - am.

v11

V12

vdg

bc

6/

6

69

A

Mors, mors

v11

VI2

vdg

bc

6 56/ 5 43

76

A

u - bi tu - us a - cu - le - us, in - fer - ne u - bi tu - a vi - cto - ri - a,

bc

76 6/ 6 6 5 76/

80

A

ab - sor - ta, ab - sor - ta, ab - sor - ta, ab - sor - ta, ab -

v11

VI2

vdg

bc

6 6 6 4 2

86

T.87-104 ALTO SMC

piano

A

sor - ta in vi - cto - ri - am, ab - sor - ta, ab - sor - ta in vi - cto - ri -

bc

76 5 56 4 76

43 2

92

A

am, piano

v11

v12

vdg

bc

6/5 56 4/2 6 6 76 5/43 56 4/2

100

A

in vi - cto - - - ri - am, ab -

v11

v12

vdg

bc

6 76 6 6 6/ 7

106

A

sor - ta in vi - cto - - - ri - am,

v11

v12

vdg

bc

6 7 7 7 7 6 6 56

112

A ab - sor - ta, ab - sor - ta in vi - cto

v11

V12

vdg

bc

6/5 6/ 7 13 11 9

119

A ri - am, ab - sor - ta, ab - sor - ta in vi -

v11

V12

vdg

bc

6 6 5 43 76/ 6 7 87

126

A cto - - - - - ri - am, ab - sor - ta, ab -

bc

56

131

A sor - ta in in in in

v11

V12

vdg

bc

6 65 6 6 7 6

138

A

vi - cto - ri - am, in in in in vi - cto - ri - am.

piano

v11

piano

VI2

piano

vdg

piano

bc

6 7/3 6 6 7/3 6 6 7/3

146

A

v11

VI2

vdg

bc

# 6

150

A

Sed De - o gra - ti - a, sed o gra - ti - a, sed De - o, De - o gra - ti -

v11

VI2

vdg

bc

6 6 6 6 6

153

A a qui de - - - dit no - bis vi - cto - - - ri-am,

6 76/ #

156

A sed De - o gra - ti - a, sed De-o, De-o gra-ti -

6 76/ 6

160

A a, sed De - o, De - o gra - ti - a,

6 # 6 6 6 #



163

A

v11

v12

vdg

bc

7/5 7/3 76/ 6 6/ # 6

166

A

v11

v12

vdg

bc

sed De - - - o gra - ti - a qui de -

76 6 6

169

A

bc

dit no - bis vi - cto - - - ri - am, vi - cto - - - - - ri - am, qui de -

7 6/ 6 76

172

A

bc

dit vi - cto - - - - -

6 6

175

A

vdg

bc

ri-am<sup>o</sup>

4/2 6 6 7 6/

179

vdg

bc

182

A

vdg

bc

sed De - o, De - o

185

A

bc

gra - ti - a qui de - - - - - dit, qui de - - - - - dit,

188

A

vdg

bc

de - dit no - bis vi - cto - - - - - ri - am,

191

vi1

bc

194

vi1

bc

197

vi1

bc

200

vi1

bc

202

TUTTI Adagio

A

vi1

vi2

vdg

bc

sed De - o gra - ti-a, sed De - o, sed De - o, sed De - o, sed De -

206

A

o gra - ti-a qui de - dit no - bis vi - cto - ri-am qui

v11

v12

vdg

bc

7 76 76 6 5 6 5 6 7 6b

211

A

de - dit no - bis vi - cto - ri-am, vi-cto - ri-am, vi - cto - ri-am, vi-cto - ri-am, vi - cto - ri-am

v11

v12

vdg

bc

7 76 7 76 7 76 # 6 65 43

215

A

per Do-mi-num

v11

v12

vdg

bc

6/ 4 # 6

219

A no-strum Je - sum Chri - - - stum, per Do - mi - num no - strum Je - sum

vi1

vi2

vdg

bc

6/ 7

222

A Chri - - - - - stum,

vi1

vi2

vdg

bc

6

225

A per Do - mi - num no - strum Je - sum Chri - - -

vi1

vi2

vdg

bc

6 6

228

A  
stum, Je - - - su Chri - stum,

v11

v12

vdg

bc

5  
43

231

A  
per Do - mi-num

v11

v12

vdg

bc

234

A  
no-strum Je - sum Chri - - - stum, per Do - mi-num no - strum Je - sum

v11

v12

vdg

bc

6/ 6 7 # 6

237

A Chri - - - - - stum,

v11

V12

vdg

bc

240

A per Do - mi - num

v11

V12

vdg

bc

243

A no-strum Je-sum Chri - - - stum, per Do-mi-num no-strum Je-sum Chri - - - stum.

v11

V12

vdg

bc

Absorta est mors  
Alto, 2 violini, viola da gamba + bc

Johann Philipp Krieger  
25. Februar 1649 - 7. Februar 1725

Alto + BC

Ritornello

BC

6

bc

10 Alto

A

Alto Ab-sor - ta est mors, ab - sor - ta est mors in vi - cto - ri - am, in vi -

bc

15

A

cto - - - ri - am, ab - sor - ta est mors, ab - sor - ta est mors in vi - cto -

bc

21

A

ri - am, in vi - cto - - - - - ri - am.

bc

25

A

U - bi tu - us mors a - cu - le - us, u - bi tu - a in - fer - ne, vi - cto - ri - a,

bc

29

A

ab - sor - ta, ab - sor - ta, ab - sor - ta in vi - cto - - -

bc

36

A

bc



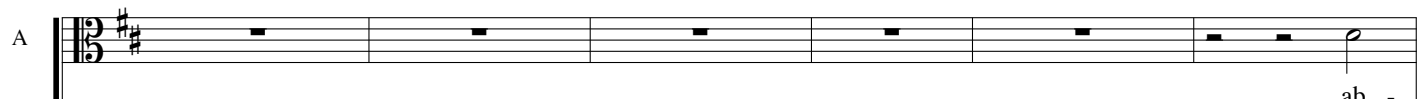

43 Alto + BC

A   
bc 

50

bc 



56

A   
bc 

62

A   
bc 

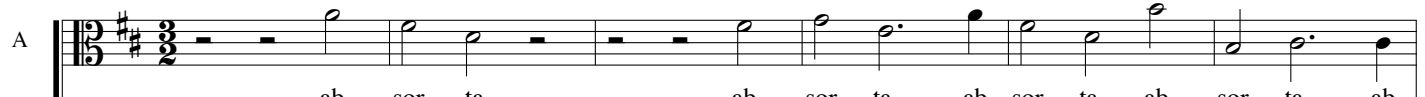
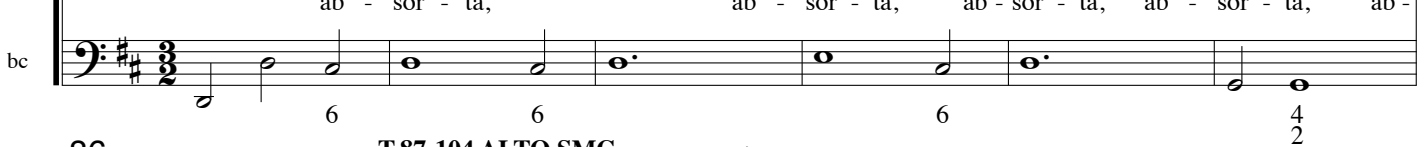
69

A   
bc 

76

A   
bc 


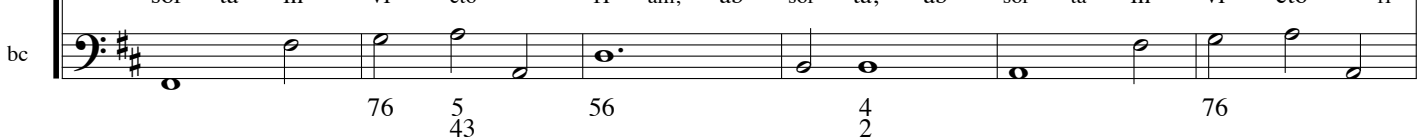
80

A   
bc 

86

T.87-104 ALTO SMC

piano

A   
bc 

92 Alto + BC

A  
am,  
bc  
6 5 56 4 2 6 6 76 5 43 56 4 2

A  
in vi - cto - - - - ri - am, ab -  
bc  
6 76 6 6 6/ 7 7

A  
sor - ta in vi - cto - - - - ri - am,  
bc  
6 7 7 7 7 6 6 56

A  
ab - sor - ta, ab - sor - ta in vi - cto - - - -  
bc  
6/5 6/ 7 13 11 9

A  
ri - am, ab - sor - ta, ab - sor - ta in vi -  
bc  
6 6 5 43 76/ 6 7 6/

A  
cto - - - - - ri - am, ab - sor - ta, ab -  
bc  
56

A  
sor - ta in in in in  
bc  
6 65 6 6 7 6

A  
vi - cto - ri - am, in piano in in in vi - cto - ri - am.  
bc  
6 7 3 6 6 7 3 6 6 7 3

146 Alto + BC

bc # 6

150

A Sed De - o gra - ti - a, sed De - o gra - ti - a, sed De - o, De - o gra - ti -  
bc 6 6 6 6 6

153

A a qui de - - - dit no - bis vi - cto - - - ri - am,  
bc 6 76/ #

156

A sed De - o gra - ti - a, sed De - o, De - o gra - ti -  
bc 6 76/ 6

160

A a, sed De - o, De - o gra - ti - a,  
bc 6 # 6 6 6 #

163

bc 7/5 7/3 76/ 6 6/ # 6



166

A sed De - - - o gra - ti - a qui de -  
bc 76 6 6

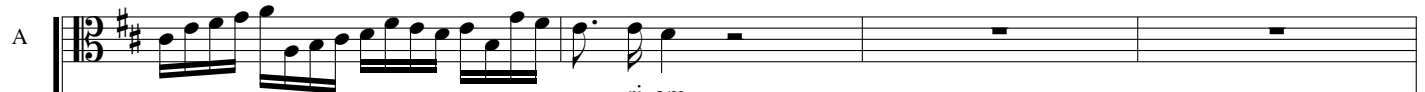
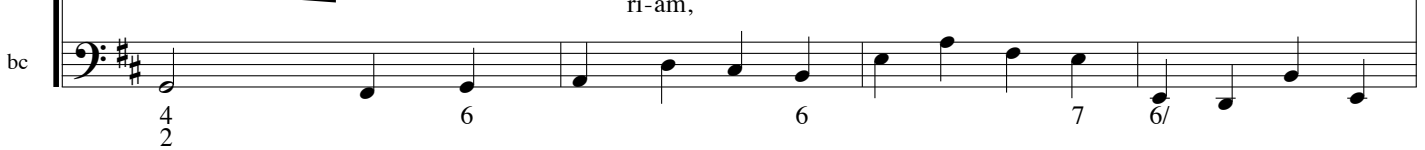
169

A dit no - bis vi - cto - - - ri - am, vi - cto - - - - - ri - am, qui de -  
bc 7 6/ 6 76

172 Alto + BC

A   
bc   
dit vi - cto

175

A   
bc   
ri-am,

179

bc 

182

A   
bc   
sed De-o, De-o gra-ti-a qui de

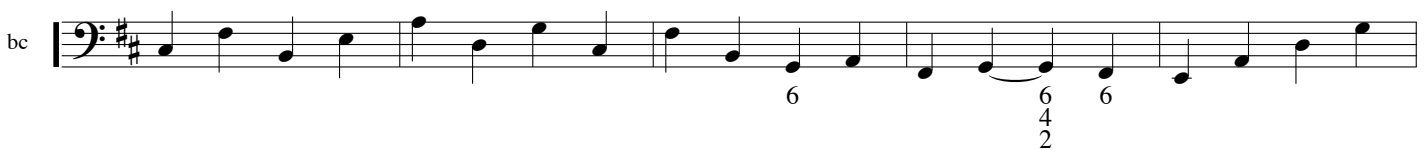
186

A   
bc   
dit, qui de-dit, de-dit no-bis vi-

189

A   
bc   
cto - - - - - ri-am,

193

bc 

198

bc 

202 Alto + BC

TUTTI Adagio

A sed De - o gra - ti-a, sed De - o, sed De - o, sed De - o, sed De -

bc 6 76/ 76/ 76 76 7

206

A o gra - ti-a qui de - dit no - bis vi - cto - ri-am qui

bc 7 76 76 6/5 6/5 6 7 6b

211

A de - dit no - bis vi - cto - ri-am, vi - cto - ri-am, vi - cto - ri-am, vi - cto - ri-am, vi - cto - ri-am

bc 7 76 7 76 7 76# 6 65 43

215

A per Do - mi - num

bc 6/ 4# 6

219

A no - strum Je - sum Chri - - - stum, per Do - mi - num no - strum Je - sum

bc 6/ 7

222

A Chri - - - - - stum,

bc 6 6

226

A per Do - mi - num no - strum Je - sum Chri - - - - - stum, Je -

bc 6

229 Alto + BC

A



su Chri - stum,


bc



5  
43

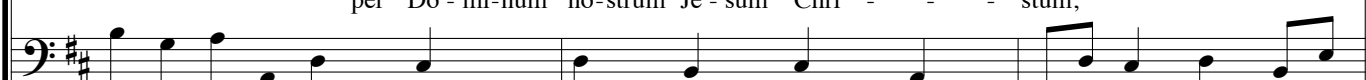
233

A



per Do - mi-num no-strum Je - sum Chri - - - stum,

bc



6/ 6 7 #

236

A



per Do - mi-num no - strum Je - sum Chri - - - - - - - - - - - stum,


bc



6


239

A



per Do - mi-num

bc



# 6 6 6 # b 4 43

243

A



no-strum Je - sum Chri - stum, per Do - mi-num no-strum Je - sum Chri - stum.

bc



6 56

Ritornello

5

9 *piano* Alto Ritornello ut supra 15 4

32 13

52

60 4

72 6 9

93 *piano*

101 3

111 8

126 5

138 *piano*

146 2

151

157 Violino 1

157

163

166

192

196

199

203

210

218

223

228

234

239

244



Ritornello

5

9 *piano* Ritornello  
Alto 15 ut supra 4

32 13

52

60 4

72 6 9

93 *piano*

101 3

111 8

126 5

138 *piano*

146 2

151

157 Violino 1

157 *2*

163

166 *22*

192

196

199

203 *p*

210 *2*

218

223

228 *2*

234

239

244 *p*

Ritornello

5

10

Alto Ritornello  
15 ut supra 4

47

53

60

71

83

99

106

113

132

140

piano

Violino 2

JPh Krieger Absorta est mors

146

151 <sup>3</sup>

158

162

166 <sup>34</sup>

204

210

216

221

227

232

237

242

Detailed description: This image shows a page of musical notation for Violino 2, measures 146 to 242. The music is written on a single staff in treble clef with a key signature of one sharp (F#) and a common time signature (C). The score consists of 12 staves of music. Measure numbers are placed at the beginning of each staff: 146, 151, 158, 162, 166, 204, 210, 216, 221, 227, 232, and 242. There are two triplet markings: a '3' above the first measure of the second staff (measure 151) and a '34' above the first measure of the fifth staff (measure 166). The notation includes various rhythmic values such as eighth, sixteenth, and thirty-second notes, as well as rests and accidentals. The piece concludes with a double bar line at the end of the final staff.

Ritornello

6

Alto 15 Ritornello ut supra 4

29 16

52

58 4

69 6

83 9

99 4

109 2

117

126 5

139 piano

146 2

152 2

158



163



168



179



182



202



208



214



218



223



229



233



242



Absorta est mors  
Alto, 2 violini, viola da gamba + bc

Johann Philipp Krieger  
25. Februar 1649 -7. Februar 1725

Ritornello

8

Alto

15

22

Ritornello  
ut supra

29

36

43

50

57

64

71

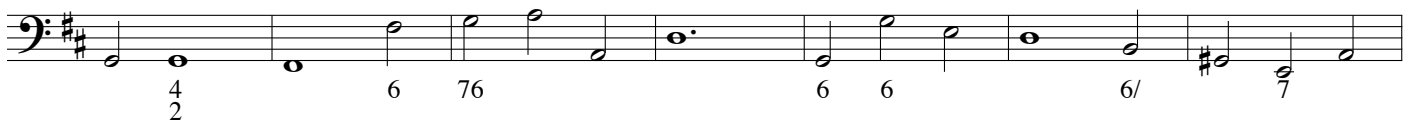
78



92



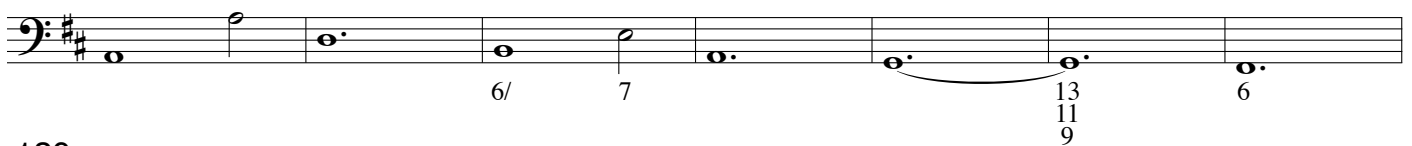
99



106



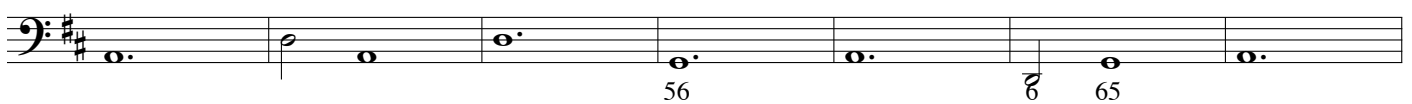
113



120



127



134



141



148



155



162







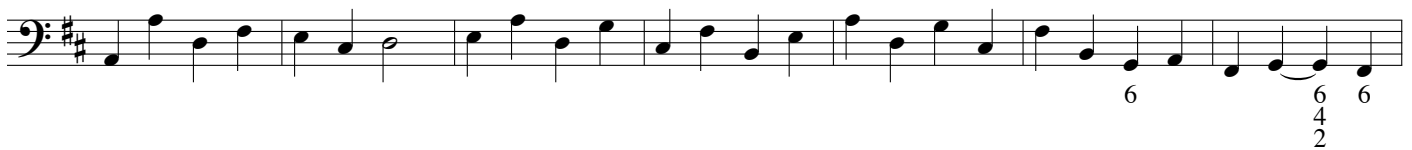
176



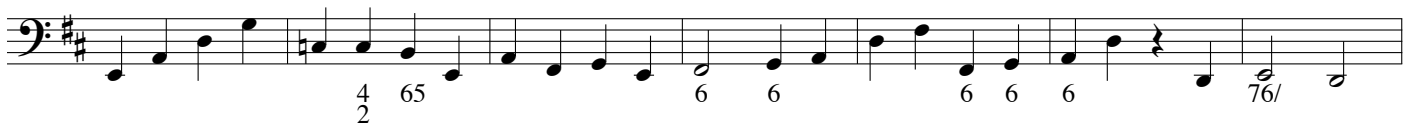
183



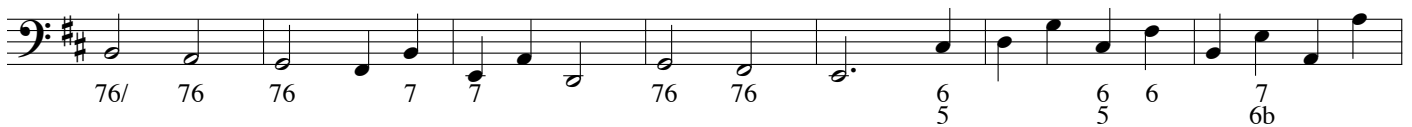
190



197



204



211



218



225



232



239

