

Offertory

I

Thomas Tomkins
1637

upon thes nots

5

10

15

20 :1:

25 :2:

30:3: 2 :4:

35 :5:

40 :6:

75

:16:



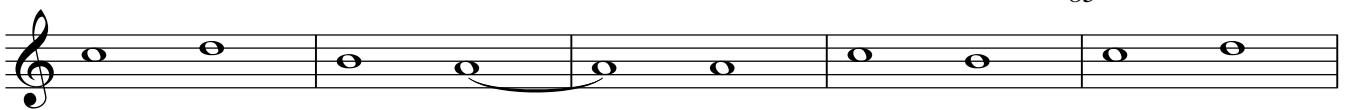
:17:

80



:18:

85



:19:



90

:20:

3



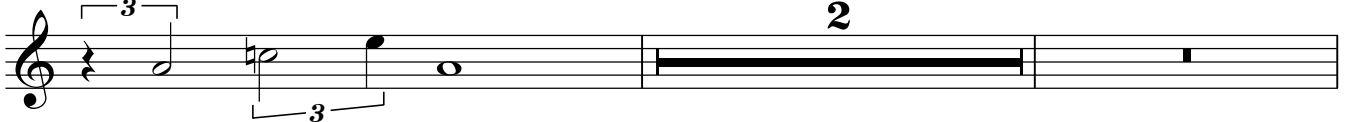
:21:

95



:22:

:23:



Musical staff with treble clef, key signature of one sharp (F#). It contains several triplet markings over eighth notes and a whole note.

105 :24:

Musical staff with treble clef, key signature of one sharp (F#). It begins with a triplet of eighth notes followed by a half note.

:25:

Musical staff with treble clef, key signature of one sharp (F#). It contains a half note followed by a quarter note.

110 :26:

Musical staff with treble clef, key signature of one sharp (F#). It contains a whole note followed by a triplet of eighth notes.

115

Musical staff with treble clef, key signature of one sharp (F#). It contains multiple triplet markings over eighth notes.

:27:

Musical staff with treble clef, key signature of one sharp (F#). It contains a whole note followed by several triplet markings over eighth notes.

:28:

120

Musical staff with treble clef, key signature of one sharp (F#). It contains a triplet of eighth notes followed by a half note.

:29:

:30:

Musical staff with treble clef, key signature of one sharp (F#). It contains a whole note followed by a quarter note.

125 :31:

Musical staff with treble clef, key signature of one sharp (F#). It contains a half note followed by a quarter note.

:32:

130 :33:

Musical staff with treble clef, key signature of one sharp (F#). It contains a triplet of eighth notes followed by a whole note.

:34:

Musical staff with treble clef, key signature of one sharp (F#). It contains a whole note followed by a quarter note.

:35:

135



:36:



140

:37:

