

In tribulatione invocavimus Dominum à 7  
C.C.T.T. cvon 3 viole da gamba 1665

Augustin Pflieger 1635c-1686c

Canto primo  
C1

Canto 2do  
C1

Tenor 1.  
C4

Tenor 2do  
C4

Violdigamba prima  
C3

Violdigamba 2da  
C4

Violdigamba 3tia  
F4

Organo  
F4

4 7 75

vdg1

vdg2

vdg3

Org

565  
#4#

7

vdg1

vdg2

vdg3

Org

334 43 #4 4# #4 4# #

10

C1 In tri - bu-la-ti - o - ne in-vo-ca-vi-mus Do - mi-num

C2 In tri - bu-la-ti - o - ne in-vo-ca-vi-mus Do - - - mi - num

vdg1

vdg2

vdg3

Org

76 565 #44# 76 # 5 4# #

13

C1 et ex-au-di-vit, ex-au - di - vit,

C2 et ex - au-di-vit, ex - au-di - vit, ex-au - di - vit,

vdg1

vdg2

Org

76 5 4# 6 76 76

16

vdg1

vdg2

vdg3

Org

7 #4 52 6 76 #5 6 5 #

18

vdg1

vdg2

vdg3

Org

6 # #  
5

20

T1

T2

vdg1

vdg2

vdg3

Org

In tri-bu-la-ti-o-ne cla-ma-vi-mus, cla-va - mi - mus ad De-um no-

In tri-bu-la-ti-o-ne cla-va - mi-mus ad De-um no -

87 # #44#

23

C1  
 C2  
 T1  
 T2  
 Org

cla-ma-vi-mus, cla-va-mi-mus ad De-um no - strum, cla-va-mi-  
 cla-ma-vi-mus, cla-va-mi-mus ad De-um no - strum,  
 strum, cla-va-mi-mus, cla-va - mi-mus, cla-va-mi-mus, cla-va - mi-mus,  
 strum, cla-va-mi-mus, cla-va - mi-mus, cla-va - mi-mus ad De-um

56 56 4# 6

25

C1  
 C2  
 T1  
 T2  
 Org

mus, cla-va - mi-mus ad De-um no - strum, cla-va-mi-mus ad De-um no-strum, cla-va-mi-mus, cla-va - mi-  
 cla-va - mi-mus ad De-um no - strum, cla-va-mi-mus ad De-um no-strum, cla-va-mi-mus, cla-va - mi-  
 cla-va - mi-mus ad De - um no-strum, ad  
 no - strum, cla-va-mi-mus, cla-va - mi-mus ad De - um no-strum, ad

6 56

27

C1  
mus ad De-um no - strum.

C2  
mus ad De-um no - strum.

T1  
De - um no - strum.

T2  
De - um no - strum.

vdg1

vdg2

vdg3

Org

6 5 6 # # 6

4#

30

vdg1

vdg2

vdg3

Org

# 6

32

C1 In tri - bu-la-ti - o - ne in-vo-ca -

C2 In tri - bu-la-ti - o - ne

T1 In tri - bu-la-ti - o - ne

T2 In tri - bu-la-ti - o - ne

vdg1

vdg2

vdg3

Org

6 6 87 87 #

35

C1 vi-mus ad Do - mi-num, in-vo-ca - vi-mus ad Do - mi-num,

C2 in-vo-ca - vi-mus ad Do - - - - - mi - num

T2 in-vo-ca - vi-mus ad

Org

6 56 765 6

37

C1 et su-sce - pi-mus mi - se - ri - cor -

C2 et su-sce - pi -

T1 in - vo - ca - vi-mus ad Do - mi - num

T2 Do - - - - - mi - num

Org # 6 765 #44# # #

39

C1 di - am e - ius, et su-sce - pi -

C2 mus mi - se - ri - cor - di-am e - ius,

T1 et su-sce - pi - mus mi - se - ri - cor - - - - di - am e - ius,

T2 et su-sce - pi - mus mi - se - ri - cor -

Org # 76 5 # # 6 6 #4

41

C1 mus mi-se-ri-cor-di-am e - ius, et su - sce - pi - mus mi - se - ri - cor - di - am e -

C2 mi-se-ri-cor-di-am e - ius, et su - sce - pi - mus mi - se - ri - cor - di - am e -

T1 et su - sce - pi - mus mi - se - ri - cor - di - am e - ius,

T2 di - am e - ius, et su - sce - pi - mus mi - se - ri - cor - - - - di - am e -

Org 4 6 76/ # 6 6 6 76

44

C1  
ius in me-di-o tem - pli, in me-di-o tem - - - - pli

C2  
ius in me-di-o tem - pli, in me-di - o tem - pli, in me-di-o tem - pli

T2  
ius,

vdg1

vdg2

Org

765

46

vdg1

vdg2

vdg3

Org

# # 6

48

T1  
Sic et laus tu - a in fi - nes or - - - - bis ter -

T2  
Sic et laus tu - a in fi - nes or - - - - bis ter -

vdg1

vdg2

vdg3

Org

# 4# 6 4# 5



50

T1  
8  
rae Ju-sti-ti-a ple-na est dex-te-ra tu-a, Do - mi - ne, Ju-sti-ti-a ple-na est dex-te - ra

T2  
8  
rae Ju-sti-ti - a ple-na est dex-te-ra tu-a, Do - mi - ne, Ju - sti-ti - a

Org  
6 # 4#

52

T1  
8  
tu - a, dex-te-ra tu - a, Do - mi-ne.

T2  
8  
ple-na est dex-te-ra tu-a, Do - mi - ne.

vdg1  
8

vdg2  
8

vdg3

Org  
# 6 4 # #

54

C1  
8  
Ju-sti-ti-a ple-na est dex-te-ra tu-a, Do - mi - ne,

C2  
8  
Ju-sti-ti - a ple-na est dex-te-ra

vdg1  
8

vdg2  
8

vdg3

Org  
4#

56

C1

C2

T1

T2

Org

Ju-sti-ti-a ple-na est dex-te-ra, ple-na est dex-te-ra tu-a, Do - mi - ne.  
 tu-a, Do - mi - ne, Ju - sti-ti-a ple-na est dex-te-ra tu - a, Do-mi-ne.  
 Al-le - lu -  
 Al-le-lu-ia,

5 4# 5 4# 6 #

58

T1

T2

vdg1

vdg2

Org

ia, al-le - lu-ia, al - le - lu - ia, al-le - lu-ia,  
 al-le - lu-ia, al - le-lu-ia, al-le - lu-ia,  
 # 6 5 #44# b  
 5 4#

60

T1

T2

vdg1

vdg2

Org

b 76/ b #

61

C1 Al-le-lu-ia, al-le-lu-ia,

C2 Al-le-lu-ia,

vdg1 Al-le-lu-ia,

Org 4#

63

C1 al-le-lu-ia, al-le-lu-ia, al-le-lu-ia, al-le-lu-ia, al-le-lu-ia.

C2 al-le-lu-ia, al-le-lu-ia, al-le-lu-ia, al-le-lu-ia, al-le-lu-ia.

T1 al-le-lu-ia, al-le-lu-ia, al-le-lu-ia, al-le-lu-ia, al-le-lu-ia.

T2 al-le-lu-ia, al-le-lu-ia, al-le-lu-ia, al-le-lu-ia.

10

Canto primo  
C1

Canto 2do  
C1

In tri - bu-la-ti-o - ne in-vo-ca-vi-mus Do - mi-num

In tri - bu-la-ti-o - ne in-vo-ca-vi-mus Do - - - mi - num

13

C1

C2

et ex - au-di - vit, ex - au - di - vit,

et ex - au-di - vit, ex - au-di - - - vit, ex - au - di - vit,

21

T1

T2

In tri - bu-la-ti-o - ne cla-ma - vi-mus, cla - va - mi - mus ad De - um no -

In tri - bu-la-ti-o - ne cla - va - mi-mus ad De - um no - - - -

23

C1

C2

T1

T2

cla-ma-vi-mus, cla-va-mi-mus ad De-um no - strum, cla-va-mi-

cla-ma-vi-mus, cla-va-mi-mus ad De-um no - strum,

strum, cla-va-mi-mus, cla-va - mi-mus, cla-va-mi-mus, cla-va - mi-mus,

strum, cla-va-mi-mus, cla-va - mi-mus, cla-va - mi-mus ad De-um

25

C1

C2

T1

T2

mus, cla-va - mi-mus ad De-um no - strum, cla-va-mi-mus ad De-um no -strum, cla-va-mi-mus, cla-va - mi-

cla-va - mi-mus ad De-um no - strum, cla-va-mi-mus ad De-um no -strum, cla-va-mi-mus, cla-va - mi-

cla-va - mi-mus ad De - um no -strum, ad

no - strum, cla-va - mi-mus, cla-va - mi-mus ad De - um no -strum, ad

27

C1  
mus ad De-um no - strum. In tri - bu-la-ti-o - ne in-vo-ca -

C2  
mus ad De-um no - strum. In tri - bu-la-ti-o - ne

T1  
De - um no - strum. In tri - bu-la-ti - o - ne

T2  
De - um no - strum. In tri - bu-la-ti - o - ne

35

C1  
vi-mus ad Do - mi-num, in - vo-ca - vi-mus ad Do - mi-num,

C2  
in-vo-ca - vi-mus ad Do - - - - - mi - num

T2  
in-vo-ca - vi-mus ad

37

C1  
et su-sce - pi-mus mi - se - ri - cor -

C2  
et su-sce - pi -

T1  
in-vo-ca - vi-mus ad Do - mi - num

T2  
Do - - - - - mi - num

39

C1  
di - am e - ius, et su-sce - pi -

C2  
mus mi - se - ri - cor - di-am e - ius,

T1  
et su-sce - pi - mus mi - se - ri - cor - - - - di - am e - ius,

T2  
et su-sce - pi-mus mi - se - ri - cor -

41

C1 mus mi - se - ri - cor - di - am e - ius, et su -

C2 mi - se - ri - cor - di - am e - ius, et su -

T1 et su - sce - pi - mus mi - se - ri - cor - di - am

T2 di - am e - ius, et su - sce - pi - mus mi - se - ri -

43

C1 sce - pi - mus mi - se - ri - cor - di - am e - ius in me - di - o tem - pli, in me - di - o tem -

C2 sce - pi - mus mi - se - ri - cor - di - am e - ius in me - di - o tem - pli, in me - di - o tem - pli, in me - di - o

T1 e - ius,

T2 cor - di - am e - ius,

45

C1 pli

C2 tem - pli

T1 Sic et laus tu - a in

T2 Sic et laus tu - a in

49

T1 fi - nes or - bis ter - rae Ju - sti - ti - a ple - na est dex - te - ra tu - a, Do - mi -

T2 fi - nes or - bis ter - rae Ju - sti - ti - a

51

T1 ne, Ju - sti - ti - a ple - na est dex - te - ra tu - a, dex - te - ra tu - a, Do - mi - ne.

T2 ple - na est dex - te - ra tu - a, Do - mi - ne, Ju - sti - ti - a ple - na est dex - te - ra tu - a, Do - mi - ne.

53

C1 Ju-sti-ti-a ple-na est dex-te-ra tu-a, Do - mi - ne,  
 C2 Ju-sti-ti - a ple-na est dex-te-ra

56

C1 Ju-sti-ti - a ple-na est dex-te-ra, ple-na est dex-te-ra tu-a, Do - mi - ne.  
 C2 tu - a, Do - mi - ne, Ju - sti - ti - a ple-na est dex-te-ra tu - a, Do - mi - ne.  
 T1 Al-le - lu -  
 T2 Al-le - lu - ia,

58

T1 ia, al - le - lu - ia, al - le - lu - ia, al - le - lu - ia,  
 T2 al - le - lu - ia, al - le - lu - ia, al - le - lu - ia,

60

C1 Al-le-lu-ia, al-le - lu-ia, al-le-lu-ia, al-le-  
 C2 Al-le-lu - ia, al - le - lu - ia, al - le - lu -  
 T1 al - le - lu - ia, al - le - lu - ia,  
 T2 al - le - lu - ia, al - le - lu - ia,

64

C1 lu - - - ia, al - le - lu - ia, al - le - lu - ia, al - le - lu - ia.  
 C2 ia, al - le - lu - - - ia, al - le - lu - ia, al - le - lu - ia.  
 T1 al - le - lu - ia, al - le - lu - ia, al - le - lu - ia.  
 T2 al - le - lu - ia, al - le - lu - - - - ia.

First line of musical notation in G major, 7/8 time signature. The staff contains a series of eighth and sixteenth notes, starting with a half note G4 and a quarter note A4.

5

Second line of musical notation, starting at measure 5. It continues the melodic line with eighth and sixteenth notes.

8

Third line of musical notation, starting at measure 8. The melody continues with eighth and sixteenth notes.

12

Fourth line of musical notation, starting at measure 12. There is a whole rest in the first measure of this line.

16

Fifth line of musical notation, starting at measure 16. The melody continues with eighth and sixteenth notes.

18

Sixth line of musical notation, starting at measure 18. This line features a complex rhythmic pattern with many sixteenth notes.

20

Seventh line of musical notation, starting at measure 20. It includes a sixteenth-note triplet marked with a '6' above the staff.

29

Eighth line of musical notation, starting at measure 29. The melody continues with eighth and sixteenth notes.

31

Ninth line of musical notation, starting at measure 31. This line features a complex rhythmic pattern with many sixteenth notes.

34

Tenth line of musical notation, starting at measure 34. It includes a sixteenth-note triplet marked with an '11' above the staff.

47

Eleventh line of musical notation, starting at measure 47. It ends with a triplet of eighth notes marked with a '3' above the staff.

52

Twelfth line of musical notation, starting at measure 52. The melody continues with eighth and sixteenth notes.

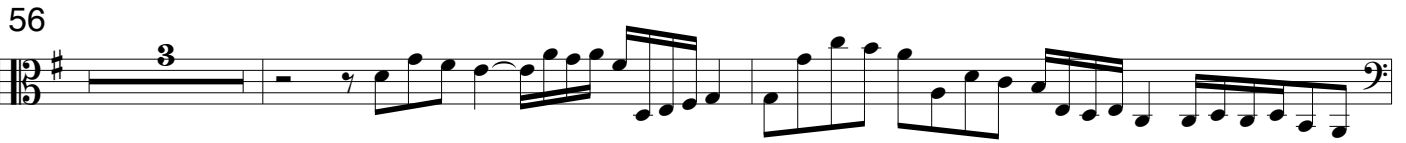


Violdigamba prima

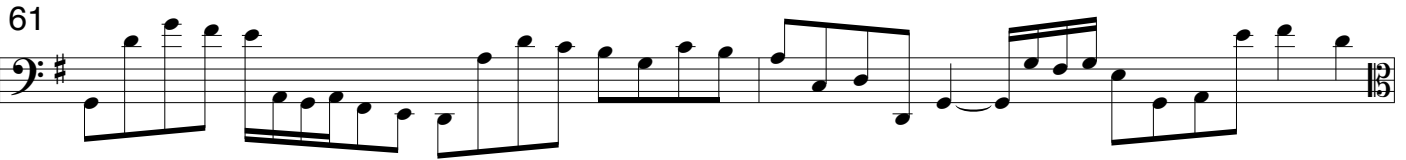
54




56

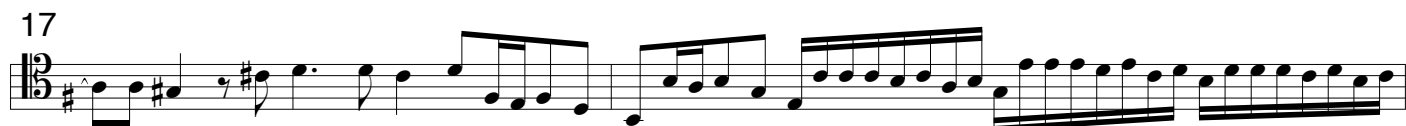


61



63






Violdigamba 2da

Pfleger, A. In tribulatione a 7

54



59



61



63





6  
7 75 565 #4#

11  
334 43 #4 4# #4 4# # 76 565 #44#

16  
76 # 5 4# # 76 5 4# 6 76 76

21  
7 #4 52 6 76 #5 6 5 # 6 5 # #

26  
87 # #44# 56 56 4# 6 6

31  
56 6 5 4# 6 # # 6 #

36  
6 6 6 5 87 87 # 6 56

41  
765 6 # 6 765 #44#, # # # 76 5 # # 6 6

46  
4 6 76/ # 6 6 6 76 765

51  
# # 6 # 4# 6 4# 4#

56  
6 # 4# # 6 4 # # 4#

61  
5 4# 5 4# 6 # # 6 5 4# #44#, b b 76/ #

4#