

Symphonia a 2

Violino

Viola da gamba

BC

5

Vln

vdg

bc

8

Vln

vdg

bc

11

C

Vln

vdg

bc

14

C

Vln

vdg

bc

Mein Sünd, mein Sünd, mein

Sünd sind schwer, mein Sünd sind

17

C

schwer, mein Sünd sind schwer und ü - - - - - ber-groß

Vln

vdg

bc

21

Vln

vdg

bc

24

C

und reu - en

Vln

vdg

bc

27

C

mich, und reu - en mich, und reu - - en mich von

Vln

vdg

bc

30

C

Her - - - - tzen;

Vln

bc

34

Vln

bc

37

Vln

vdg

bc

40

vdg

bc

42

C

der sel - ben mach mich,

Vln

vdg

bc

46

C

Vln

vdg

bc

50

C

Vln

vdg

bc

54

C

Vln

vdg

bc

57

C

Vln

vdg

bc

60

C

Vln

vdg

bc

an, daß du hast

der sel - ben mach mich quit

und loß durch dei - nen Tod, durch dei - nen Tod und Schmer - - - -

und zeig mich dei - nem Va - - - - ter

tzon:

63

C
gnug für mich ge - than,

vlg

bc

65

C
so werd ich quit,

vlg

bc

68

C
so werd ich quit der Sün - den

Vln

vlg

bc

72

C
Last. Er - - - halt mir fest, was

Vln

vlg

bc

76

C

du, du, du, du dich mir ver - spro - - chen

Vln

vdg

bc

79

C

hast, was du dich mir ver - spro - - chen

Vln

vdg

bc

82

C

hast.

Vln

vdg

bc

85

Vln

vdg

bc

88

Vln

vdg

bc

91

B

Kompt her zu mir, kompt her zu mir,

Vln

vdg

bc

97

B

kompt her zu mir

Vln

vdg

bc

103

B

al - - - le, al - - - le, al - - -

Vln

vdg

bc

108

B
le, die ihr müh - se - lig, müh - se - lig und be-la - den seid,

Vln

vdg

bc

114

B
ich will euch er - qui - - - -

Vln

vdg

bc

119

B
cken, er - qui - - - - - cken,

Vln

vdg

bc

123

B
kommt her zu mir,

Vln

vdg

bc

129

B
kompt her zu mir, kompt her zu mir

Vln

vdg

bc

135

B
al - - - - le, al - - -

Vln

vdg

bc

140

B
le, al - - - - le, die ihr müh - se - lig, müh -

Vln

vdg

bc

145

B
se - lig und be - la - den seid,

Vln

vdg

bc

151

B
 ich will euch er - qui - - - - - cken, er - qui - - - - -

Vln

vdg

bc

155

B
 cken, ich will euch er - qui - cken.

Vln

vdg

bc

160

B
 Neh-met auf euch mein Joch und ler -

Vln

vdg

bc

165

B
 net, ler-net, ler - - - net, denn ich bin sanft - mü - tig, sanft -

Vln

vdg

bc

169

B
 mü - tig, sanft - mü - tig und von Her - tzen de - mü - tig; so

Vln

vdg

bc

174

B
 wer - det ihr Ru - he fin - den für eu - re See - le,

Vln

vdg

bc

179

B
 so wer - det ihr Ru - he fin - den für

Vln

vdg

bc

183

B
 eu - re See - le, denn mein Joch ist sanfft, denn mein Joch ist sanft

Vln

vdg

bc

B

und mei - - - - ne Last ist leicht.

Vln

vdg

bc

192

C

Wo ist solch ein Gott wie du bist,

B

Wo ist solch ein Gott wie du bist,

Vln

vdg

bc

195

C

wo ist solch ein Gott wie du bist, der die

B

wo ist solch ein Gott wie du bist,

Vln

vdg

bc

198

C Sün - de, der die Sün - de, der die Sün - de ver - giebt,

Vln

vdg

bc

201

B der die Sün - de, der die Sün - de, der die Sün - - - de ver -

Vln

vdg

bc

205

C und er - lās - set die Mis - se - that den ü - bri - gen sei - nes Erb - theils,

B giebt, und er - lās - set die Mis - se - that den ü - bri - gen sei - nes Erb - theils, der sei - nen

Vln

vdg

bc

209

C
der sei-nen Zorn nicht e - wig-lich be-hält,

B
Zorn nicht e - wig-lich be-hält,

Vln

vdg

bc

213

C
der sei-nen Zorn, der sei-nen Zorn nicht e - wig-lich er -

B
der sei-nen Zorn nicht e - wig-lich er -

Vln

vdg

bc

217

C
hält, barm - her - - - tzig.

B
hält, denn er ist barm - her - - - tzig, barm - her - - - tzig. Er wird sich

Vln

vdg

bc

220

B
un - srer, er wird sich un - srer Mis - se - that er - bar - men,

Vln

bc

223

C
Er wird sich un - srer, er wird sich un - srer Mis - se - that er - bar - men,

Vln

vdg

bc

226

C
un - sre Mis - se - that däm - pfen und al - le un - sre Sün - den, un - sre

B
un - sre Mis - se - that däm - pfen und al - le un - sre Sün - den, un - sre Sün - den, und

Vln

vdg

bc

229

C
Sün - den, und al - le un - sre Sün - den, un - sre Sün - den, und al - le un - sre Sün - den, un - sre

B
al - le un - sre Sün - den, un - sre Sün - den, und al - le un - sre Sün - den, un - sre Sün - den, und

Vln

vdg

bc

232

C Sün-den, und al-le un-sre Sün-den, un-sre Sün-den, un-se-re Sün-den in die Tie-

B al-le un-sre Sün-den, un-sre Sün-den, und al-le un-sre Sün-den in die Tie-

Vln

vdg

bc

236

C fe des Mee- - - res wer - - - fen.

B fe des Mee- - - res wer - - - fen.

Vln

vdg

bc

Symphonia a 2

11
Mein Sünd, mein Sünd, mein Sünd sind schwer, mein

16
Sünd sind schwer, mein Sünd sind schwer und ü - - - - - ber-groß

26
und reu - en mich, und reu - en mich, und reu - en mich von Her - - -

31
tzen; der sel - ben

45
mach mich, der sel - ben mach mich quit

50
und loß durch dei - nen Tod, durch dei - nen Tod und Schmer - - - - -

55
tzen: und zeig mich dei - nem Va - ter an,

61
daß du hast gnug für mich ge - than,

66
so werd ich quit, so werd ich quit der

71
Sün - den Last. Er - - - - - halt mir fest, was

76
du, du, du, du dich mir ver - spro - chen hast, was du dich mir

81
ver - spro - chen hast.

8 71 30

192



Wo ist solch ein Gott wie du bist, wo ist solch ein

196



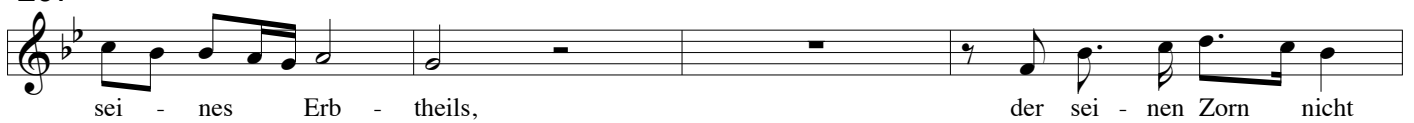
Gott wie du bist, der die Sün-de, der die Sün-de, der die Sün - de ver -

200



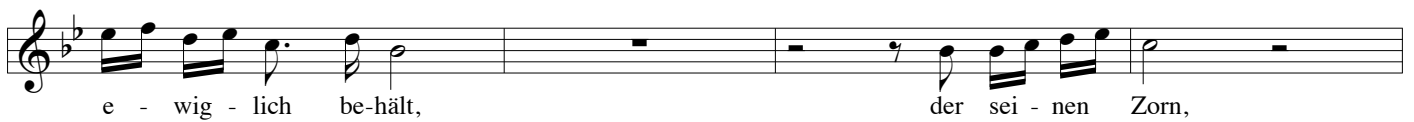
giebt, und er-läs - set die Mis - se-that den ü - bri-gen

207



sei - nes Erb - theils, der sei - nen Zorn nicht

211



e - wig - lich be-hält, der sei - nen Zorn,

215



der sei - nen Zorn nicht e - wig - lich er - hält, barm -

219



her - tzig. Er wird sich un-srer, er wird sich un - srer Mis-se-that er-bar-men,

225



un-sre Mis-se-that däm - pfen und al - le un - sre Sün-den, un - sre

229



Sün-den, und al-le un-sre Sün-den, un-sre Sün-den, und al-le un-sre Sün-den, un-sre Sün-den, und al-le un-sre

233



Sün-den, un - sre Sün-den, un - se - re Sün - den in die Tie - - - fe des

237



Mee - - - - res wer - - - - fen.

Symphonia a 2

90
Kompt her zu mir, kompt her zu mir,

97
kompt her zu mir al - - - - le,

105
al - - - - le, al - - - - le, die ihr müh - se - lig, müh -

111
se - lig und be-la - den seid, ich will euch er-qui - - - -

119
cken, er - qui - - - - cken, kompt her zu mir,

127
kompt her zu mir, kompt her zu mir

135
al - - - - le, al - - - - le, al - - - -

142
le, die ihr müh - se - lig, müh - se - lig und be - la - den seid,

148
ich will euch er-qui - - - - cken, er-qui - - - - cken,

156
ich will euch er - qui - cken. Neh-met auf euch mein

163
Joch und ler - - - - net, ler-net, ler - net, denn ich bin sanft -

168
mü - tig, sanft - mü - tig, sanft - mü - tig und von Her - tzen de-mü -

173

Musical notation for measure 173, bass clef, B-flat major. The melody consists of a series of eighth and quarter notes.

tig; so wer - det ihr Ru - he fin - den für eu - re See - le,

178

Musical notation for measure 178, bass clef, B-flat major. It begins with a fermata over a whole note, followed by eighth and quarter notes.

so wer - det ihr Ru - he fin - den für eu - re See -

184

Musical notation for measure 184, bass clef, B-flat major. The melody consists of quarter and eighth notes.

le, denn mein Joch ist sanfft, denn mein Joch ist sanft

188

Musical notation for measure 188, bass clef, B-flat major. It features a double bar line and includes quarter, eighth, and sixteenth notes.

und mei - ne Last ist leicht. Wo ist solch ein Gott wie

194

Musical notation for measure 194, bass clef, B-flat major. It includes quarter, eighth, and sixteenth notes, ending with a fermata.

du bist, wo ist solch ein Gott wie du bist,

202

Musical notation for measure 202, bass clef, B-flat major. The melody is more active with eighth and sixteenth notes.

der die Sün-de, der die Sün-de, der die Sün - - - de ver-giebt, und er-läs - set die

206

Musical notation for measure 206, bass clef, B-flat major. It features a mix of quarter and eighth notes.

Mis - se-that den ü - bri-gen sei - nes Erb - theils, der sei - nen Zorn nicht e - wig-lich be -

210

Musical notation for measure 210, bass clef, B-flat major. It includes a fermata over a whole note and eighth notes.

hält, der sei - nen Zorn

216

Musical notation for measure 216, bass clef, B-flat major. The melody consists of quarter and eighth notes.

nicht e - wig-lich er - hält, denn er ist barm - her - - tzig, barm-her - tzig. Er wird sich

220

Musical notation for measure 220, bass clef, B-flat major. It includes eighth and sixteenth notes, ending with a fermata.

un - srer, er wird sich un-srer Mis - se - that er - bar-men, un - sre Mis-se-that

227

Musical notation for measure 227, bass clef, B-flat major. It features a mix of quarter and eighth notes.

däm - pfen und al - le un - sre Sün-den, un - sre Sün - den, und al - le un - sre Sün-den, un - sre

230

Musical notation for measure 230, bass clef, B-flat major. It features eighth and sixteenth notes.

Sün-den, und al - le un - sre Sün-den, un - sre Sün - den, und al - le un - sre Sün-den, un - sre

233

Musical notation for measure 233, bass clef, B-flat major. It features quarter and eighth notes.

Sün-den, und al-le un-sre Sün-den in die Tie - fe des Mee - res wer - fen.

Symphonia a 2

Musical score for Violino, Symphonia a 2, measures 1-72. The score is written in G minor (one flat) and common time. It consists of 14 staves of music. The notation includes various rhythmic values, accidentals, and dynamic markings. The piece features a complex rhythmic structure with many sixteenth and thirty-second notes. There are several rests and fermatas throughout the score. The key signature is G minor, and the time signature is common time. The score is numbered 1-72 at the beginning of each staff.

76



80



84



88



93



102



108



121



127



137



143



156



161



166



172



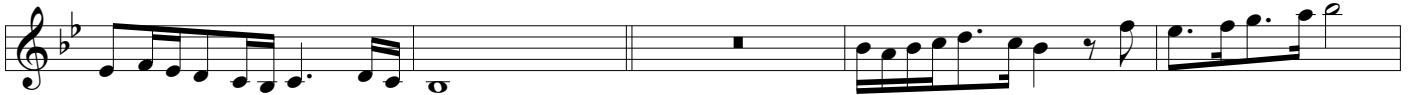
180



185



190



195



201



207



213



218



222



225



228



232



236



Symphonia a 2

Musical score for Violino, Symphonia a 2, measures 1-93. The score is written in G minor (one flat) and common time. It consists of 13 staves of music. The notation includes various rhythmic values, accidentals, and dynamic markings. The piece features a complex rhythmic structure with many sixteenth and thirty-second notes. There are several rests and fermatas throughout the score. The key signature is G minor, and the time signature is common time. The score is divided into measures, with measure numbers 5, 9, 13, 20, 25, 30, 34, 37, 52, 55, 57, 68, and 72 indicated at the beginning of their respective staves. The piece concludes with a final measure on the 13th staff.

76



80



84



88



93



102



108



121



127



137



143



156



161



166





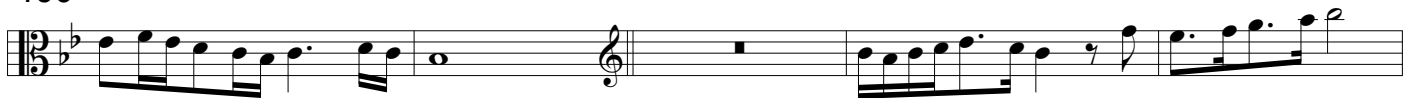
180



185



190



195



201



207



213



218



222



225



228



232



236



Symphonia a 2

The image displays a musical score for Viola da gamba, titled "Symphonia a 2". The score is written in bass clef with a key signature of two flats (B-flat and E-flat) and a common time signature (C). The music consists of ten staves, each beginning with a measure number: 1, 5, 8, 11, 14, 20, 23, 26, 30, 39, 42, and 46. The notation includes various rhythmic values such as eighth, sixteenth, and thirty-second notes, as well as rests and accidentals. There are several multi-measure rests: a 7-measure rest at measure 30, a 3-measure rest at measure 14, and another 3-measure rest at measure 46. The score concludes with a final note in measure 46.

52

55

61

64

66

71

75

78

81

84

87

91

99

Musical notation for measure 99, featuring a treble clef, a key signature of one flat (B-flat), and a 3/4 time signature. The notation includes a series of eighth and sixteenth notes, a dotted half note, and a triplet of eighth notes.

107

Musical notation for measure 107, featuring a treble clef, a key signature of one flat (B-flat), and a 3/4 time signature. The notation includes a series of eighth and sixteenth notes, a dotted half note, and a quartet of eighth notes.

116

Musical notation for measure 116, featuring a treble clef, a key signature of one flat (B-flat), and a 3/4 time signature. The notation includes a series of eighth and sixteenth notes, a dotted half note, and a triplet of eighth notes.

124

Musical notation for measure 124, featuring a treble clef, a key signature of one flat (B-flat), and a 3/4 time signature. The notation includes a series of eighth and sixteenth notes, a dotted half note, and a pair of eighth notes.

131

Musical notation for measure 131, featuring a treble clef, a key signature of one flat (B-flat), and a 3/4 time signature. The notation includes a series of eighth and sixteenth notes, a dotted half note, and a pair of eighth notes.

138

Musical notation for measure 138, featuring a treble clef, a key signature of one flat (B-flat), and a 3/4 time signature. The notation includes a series of eighth and sixteenth notes, a dotted half note, and a quartet of eighth notes.

147

Musical notation for measure 147, featuring a treble clef, a key signature of one flat (B-flat), and a 3/4 time signature. The notation includes a series of eighth and sixteenth notes, a dotted half note, and a triplet of eighth notes.

155

Musical notation for measure 155, featuring a treble clef, a key signature of one flat (B-flat), and a 3/4 time signature. The notation includes a series of eighth and sixteenth notes, a dotted half note, and a series of eighth notes.

160

Musical notation for measure 160, featuring a treble clef, a key signature of one flat (B-flat), and a 3/4 time signature. The notation includes a series of eighth and sixteenth notes, a dotted half note, and a series of eighth notes.

165

Musical notation for measure 165, featuring a treble clef, a key signature of one flat (B-flat), and a 3/4 time signature. The notation includes a series of eighth and sixteenth notes, a dotted half note, and a series of eighth notes.

169

Musical notation for measure 169, featuring a treble clef, a key signature of one flat (B-flat), and a 3/4 time signature. The notation includes a series of eighth and sixteenth notes, a dotted half note, and a triplet of eighth notes.

177

Musical notation for measure 177, featuring a treble clef, a key signature of one flat (B-flat), and a 3/4 time signature. The notation includes a series of eighth and sixteenth notes, a dotted half note, and a series of eighth notes.

182



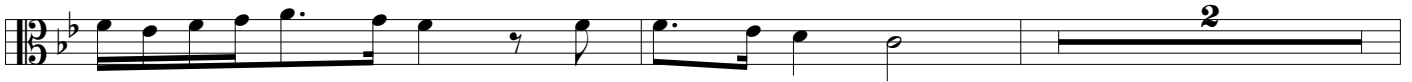
187



191



196



200



205



211



215



224



227



231



234



237



Symphonia a 2



7



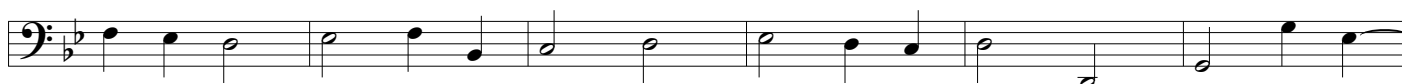
13



20



27



33



39



44



51



57



62



67





78



85



91



98



105



112



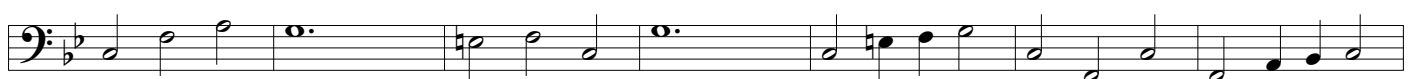
119



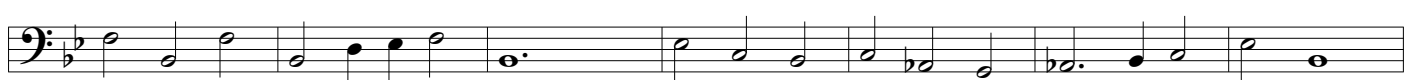
126



133



140



147





162



169



176



183



190



197



204



211



218



225



232

